



16 Port E1 VCL-MegaConnect-Jr. Digital Access Cross Connect Switch (DACCS) with CAS

VCL-1410-16E1

Product Brochure & Data Sheet

U.K.

Valiant Communications (UK) Ltd
Central House Rear Office
124 High Street, Hampton Hill
Middlesex, TW12 1NS,
U.K.

E-mail: gb@valiantcom.com

U.S.A.

Valcomm Technologies Inc.
4000 Ponce de Leon Blvd.,
Suite 470, Coral Gables,
FL 33146, U.S.A.

E-mail: us@valiantcom.com

INDIA

Valiant Communications Limited
71/1, Shivaji Marg,
New Delhi - 110015,
India

E-mail: mail@valiantcom.com

INDEX

S.No.	Particulars	Pg.No.
1.	Introduction	3
2.	Features and Highlights	5
3.	Shelf Description	6
4.	Accessing 16 Port E1 DACS - VCL-MegaConnect-Jr.	7
5.	System Description and Specifications	8
6.	Ordering Information and Support	10



Introduction

The 16 Port E1 DACS - VCL-MegaConnect-Jr. is an E1 digital cross connect switch, which presents its user an easy to use, yet a sophisticated platform to cross connect up to 16 E1 ports. E1 Digital Cross Connect Switch offers full cross connect functionality to cross connect, and/or aggregate DS-0s, "n"x64Kbps consecutive data channels and fractional E1 channels to full E1 channels.

16 Port E1-Digital Access Cross Connect VCL-MegaConnect-Jr.™



The 16 Port E1 Digital Cross Connect Switch occupies only a 2U high rack-space and is a complete 19-inch stand-alone unit that provides connectivity of up to 16 E1 ports. The unit operates on a -48V DC input power-supply (AC input adapter is optional).

The system is supplied with a CLI text-based, easy-to-use GUI (Graphical User Interface) that offers the user complete control to prepare multiple configuration maps (and store them as data files) and the ease of downloading them from a PC. Dry contact relay alarms are also available at rear of the system to connect the system to external audio and visual alarms.

The 16 Port E1 Digital Cross Connect Switch also has a TCP-IP Access feature which allows the DACS to be connected on a TCP-IP network (10/100 base interface) for remote access for configuration and monitoring.

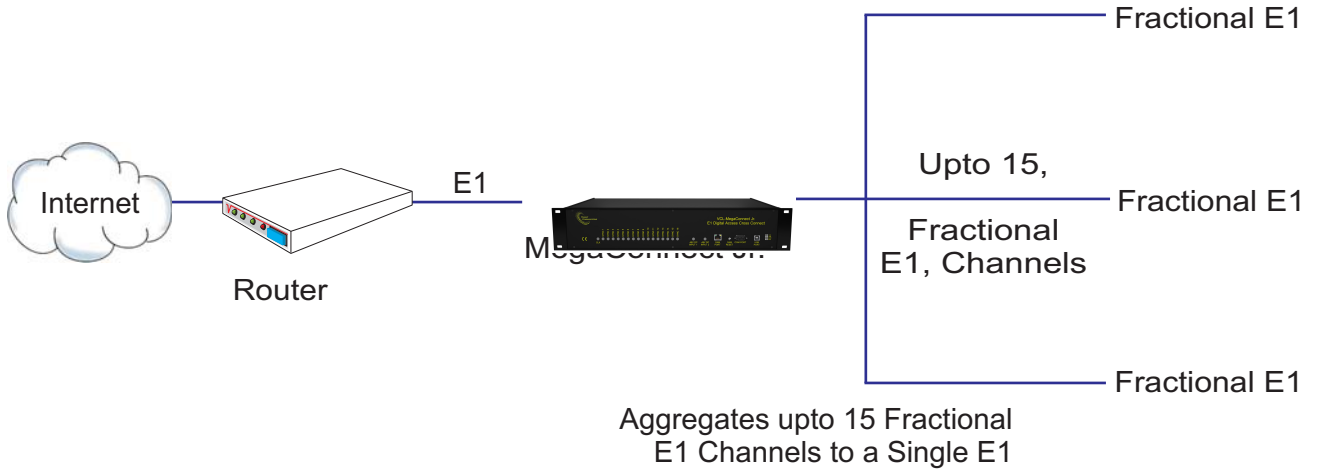
The 16 Port E1 DACS – VCL-MegaConnect Jr can also be ordered for special non-intrusive (Hi-Z) monitoring applications in which (pre-assigned monitoring ports) E1 ports can be connected to monitoring/billing equipment for live traffic monitoring (non-intrusive monitoring).

Highlights

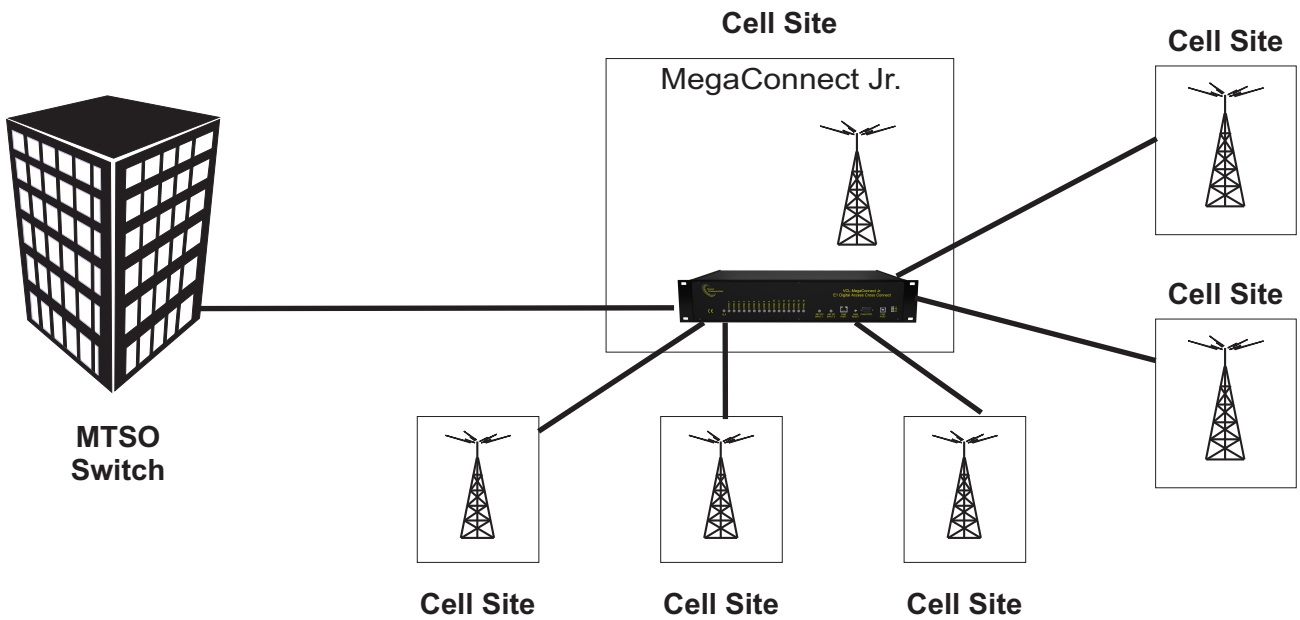
- Stratum 3 clock
- Remote TCP/IP access for configuration and monitoring
- Text-based user-friendly CLI for easy configuration
- Telnet remote access
- Available in 16 E1 ports configuration
- 1+1 -48V DC Input Power Supply Redundancy (Dual Power Input allows the equipment to be powered from two separate -48V DC sources)
- SNMP traps
- Maintains Access Security Log
- USB and RS232, interface for local connection through the serial interface to the "Network Control and Management Software"
- User Selectable Internal, External and Loop-timed clock synchronization priority options
- Local and remote loopback facility.

Application Diagrams

ISP Digital Cross Connect Application – Providing Fractional E1s to Subscribers



Backhaul – Cellular Application using VCL-MegaConnect-Jr. 16 Port



Features

- Provides DS0, "n"x64Kbps and fractional E1 grooming for up to 16 E1 ports
- Rear access
- User friendly CLI (text-based) commands
- RS232 serial, USB serial interfaces for local terminal access
- 10/100BaseT Ethernet Interface for remote access over an IP network
- Telnet – Remote access over IP links
- SNMP Traps and NMS for real-time remote monitoring and management over an IP network
- Easy to install
- Configurable from 2 E1 ports to 16 E1 ports depending on user requirements
- LED indications on the front panel for alarms and status.

Benefits

- Reduce access costs by combining partially loaded E1s to a single E1
- Rear access wiring improves wiring and cable management
- Support Nx64kbps fractional E1 operation and grooming
- Easy to install and simple to use

Operations and Maintenance (OAM) Interfaces

- RS232 serial interface for local terminal access
- USB serial interfaces for local terminal access
- 10/100BaseT Ethernet Interface for remote access over an IP network.

16 Port E1 DACS - VCL-MegaConnect Jr

Shelf Description

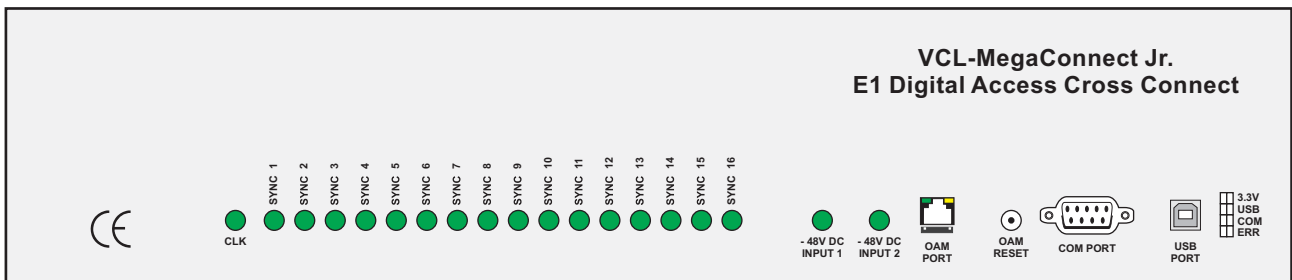
2U high standalone system

The 16 Port E1 DACS - VCL-MegaConnect Jr unit is a 2U, 19 Inch Shelf, fitted with a backplane that provides rear access of all external interfaces.

The 2Mbps, E1 Interfaces are, 120 Ohms twisted pair RJ-45 connectors. 75 Ohms E1 option is also available.

16 Port E1 DACS - VCL-MegaConnect Jr

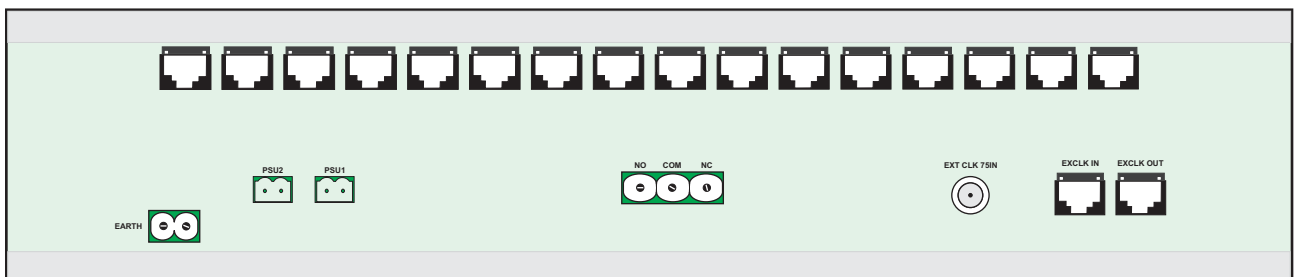
Front view of the shelf



Rear view of the shelf

RJ-45 Version

120 Ohms, RJ-45 E1 Interface Connectors - 16 E1 Ports

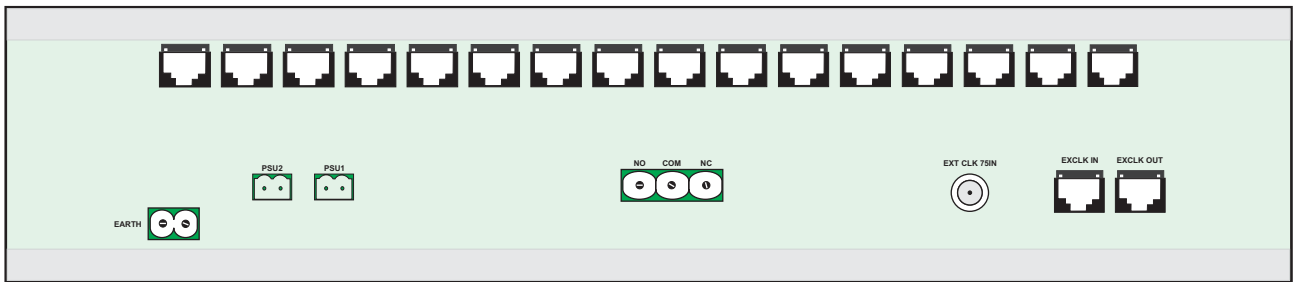


Accessing 16 Port E1 DACS - VCL-MegaConnect-Jr. Standalone Shelf

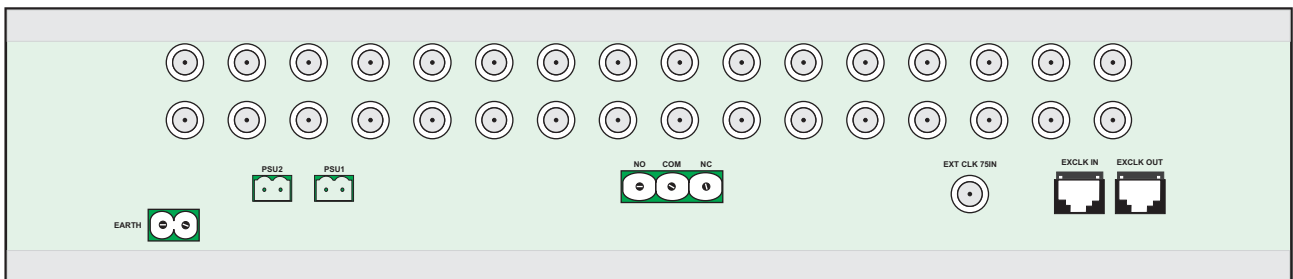
2Mbps streams are accessible at the backplane. Access is also available for 2 alarm extensions 48V power input is provided at the rear of the 2U shelf. The RS232 interface for monitoring and control is also taken from the rear panel of the stand-alone VCL-DACS unit.

16 Port E1 DACS - VCL-MegaConnect-Jr. offers programming via an RS232 port for control and monitoring of the unit.

Rear view of shelf 120 Ohms - (RJ-45 Version)



Rear view of the shelf 75 Ohms - (BNC Version)



Programming Features

- Specifying the priority sequence for clock selection
- Enabling or disabling 2Mbps Ports (masking) of the 2Mbps ports that are not in use
- Creating a cross connect between E1s at DS-O level (single time-slot level) using the easy-to-use CLI (text-based) commands

Status Monitoring

- Clock selection
- Status of alarms
- Enabled/Disabled status of 2Mbps ports
- Monitoring of the 16 Port E1 DACS - VCL-MegaConnect-Jr. status and configuration

Alarm status, monitoring

- Loss of incoming signal at all 2 Mbps ports
- Configuration error alarm

In addition to the above monitoring facilities, 16 Port E1 DACS - VCL-MegaConnect-Jr. is provided with LEDs, which indicate various fault conditions.

Monitoring 16 Port E1 DACS - VCL-MegaConnect-Jr. via LED indications

- 1 to 16 E1 Ports LED indicators
- +3 V DC present
- - 48V DC present
- Configuration error

Technical Specifications - E1 Interface:

Number of E1 Ports	16
Available Time-Slots per E1	1-31 (PCM 31) / 1-16, 17-31 (PCM 30)
Conformity	G. 703
Bit rate	2048Kbps \pm 50ppm
Code	HDB3
Nominal Impedance	120 Ω balanced/75 Ω unbalanced
Peak Voltage of a mark For 120 Ω balanced interface For 75 Ω unbalanced interface	3.0 V \pm 0.3 V 2.37 V \pm 0.237 V
Connector	RJ-45 (F) for 120 Ω impedance and BNC for 75 Ω impedance
Peak Voltage of a space For 120 Ω balanced interface For 75 Ω unbalanced interface	0 V \pm 0.3 V 0 V \pm 0.237 V
Nominal Pulse Width	244ns
Pulse Mask	As per CCITT rec. G.703

Time-slot selection / cross - connect:

Any time-slot to any time-slot, through an internal, best byte, non-blocking TSI switch.
--

Clock

Internal	(Stratum3 level)
Loop-timed	From any E1 Port (with automatic fallback)
External	75 Ohms - 2.048 MHz

Management and Control Ports

Serial Management Port - RS232 interface (COM Port)
USB Serial Port
10/100BaseT for remote management over a LAN / TCP/IP network.

System Management and Access

Windows XP and Windows 7 compatible Graphical User Interface (GUI)
Telnet - CLI (Command Line Interface)

Telnet specification and regulation compliance

Meets CE requirements
Complies with FCC, Part 68 and Part 15 sub part A specifications
Safety - UL 1459 Issue 2

Alarm contact closures

1 Alarm relay
Type - form "C" relay

Temperature

Operating	0°C to 50°C
Humidity	5% to 95% Non-condensing

Power consumption

Power consumption	5 Watts
-------------------	---------

Mechanical Specifications

Width	480mm
Depth	280mm
Height	90 mm
Weight	5 kg.

Ordering Information

16 Port E1 DACS - VCL-MegaConnect-Jr.			
S.No.	Part No.	Product Description	Qty
1.	VCL-1410-16E1-075-CAS-DLX	VCL-MegaConnect-Jr 16 Port E1 DACS - Digital Access Cross connect Switch 19" Shelf 2U High Rack Mount Version Supports: - 16 x E1 75 Ohms BNC (F) - 2 x -48V DC Power Supply Input - 1 x System Core Cables, Installation Accessories, Documentation, System User Manual, System User Manual Disk etc (Set) - OAM: 10/100BaseT Ethernet – RJ45 (SNMP, Telnet) and Serial Port (USB and DB-9 COM Port)	1
2.	VCL-1410-16E1-120-CAS-DLX	VCL-MegaConnect-Jr 16 Port E1 DACS - Digital Access Cross connect Switch 19" Shelf 2U High Rack Mount Version Supports: - 16 x E1 120 Ohms RJ45 (F) - 2 x -48V DC Power Supply Input - 1 x System Core Cables, Installation Accessories, Documentation, System User Manual, System User Manual Disk etc (Set) - OAM: 10/100BaseT Ethernet – RJ45 (SNMP, Telnet) and Serial Port (USB and DB-9 COM Port)	1

Technical specifications are subject to changes without notice.
Revision 10 - March 29, 2019.

U.K.

Valiant Communications (UK) Ltd
Central House Rear Office
124 High Street, Hampton Hill
Middlesex, TW12 1NS,
U.K.

E-mail: gb@valiantcom.com

U.S.A.

Valcomm Technologies Inc.
4000 Ponce de Leon Blvd.,
Suite 470, Coral Gables,
FL 33146, U.S.A.

E-mail: us@valiantcom.com

INDIA

Valiant Communications Limited
71/1, Shivaji Marg,
New Delhi - 110015,
India

E-mail: mail@valiantcom.com